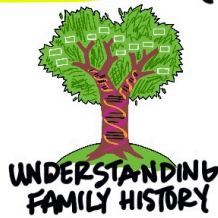


A Seat At The Table

CONVERSATIONS ABOUT MEDICAL/LEGAL OUTCOMES FOR BLACK PATIENTS

GETTING TO A DIAGNOSIS...



LIMITED ACCESS TO CANCER SCREENING



ACCESS TO INSURANCE



BLACK CANCER IS SHAPED BY:

- HISTORY OF STRUCTURAL RACISM
- BLACK CANCER MYTHS
- FINANCIAL STRESS
- DANGEROUS/ LOW WAGE WORK
- CHILDCARE/ ELDERCARE
- HISTORY OF MEDICAL RACISM
- FOOD DESERTS
- CHILD CUSTODY/ DIVORCE
- ACCESS TO TRANSPORTATION
- BODY IMAGE CHANGES/ HAIR LOSS

TREATMENT

MEDICAL RACISM & SEXISM

SUPPORT FOR PRACTICAL ISSUES — TRANSPORTATION — FOOD — CHILDCARE/ELDERCARE — ETC.



ONGOING FINANCIAL STRESS

LACK OF ACCESS

CLINICAL TRIALS — MISTRUST

CUSTODIAL ISSUES

TREATMENT DISRUPTIONS

MEDICAID/ INSURANCE DENIALS

HOUSING INSTABILITY



HOW CLC CAN HELP



SOCIAL SECURITY DISABILITY

CELEBRATION OF LIFE/SURVIVORSHIP — END OF LIFE/SUPPORTS



SPIRITUAL SUPPORT & FAITH COMMUNITY



NEXT CHAPTER



CLC CREATING CULTURALLY RESPONSIVE MATERIAL



EXPANSIVE DEFINITION OF FAMILY



EARN & KEEP TRUST

How Financial Toxicity shows up for Black women facing breast cancer who come to CLC for legal help:

- 15% are at risk for losing their housing compared to 5% of their white counterparts
- 70% are below 200% of the Federal Poverty Guidelines compared to 37% of their white counterparts
- 27% have legal needs directly related to housing security or debt/financial issues compared to 10% of their white counterparts

Why supporting Black cancer thrivers is Important:

“The breast cancer mortality rate in Black women is 38% higher than in white women.”

<https://acsjournals.onlinelibrary.wiley.com/doi/full/10.3322/caac.21863>

When traditional support is not enough:

“Reasons for continuing disparities largely reflect the direct and indirect effects of structural racism, including biases in the health care system and inequitable health care access. Even when treatment is available, patients with limited financial resources may face nonmedical barriers, such as the lack of transportation, the inability to take time off from work, and other logistical challenges.”

<https://acsjournals.onlinelibrary.wiley.com/doi/full/10.3322/caac.21874>

Welcome to The Cookout

Who is also impacted by a cancer diagnosis:

“Clinicians providing treatment and support for Black women with breast cancer should be aware of how the health context of the family—including family comorbidity and the range of family caregiving responsibilities—may affect patient and caregiver outcomes (Ellis, 2022).”

<https://doi.org/10.1016/j.socscimed.2023.116528>



Want to learn more? Meet us here:

<https://www.cancerlegalcare.org/what-we-do/studies-research/the-cookout.html>



Cancer Legal Care

Welcome to the Cookout

In the Fall 2024/Winter of 2025, eleven Black/African American cancer supporters/supporters lent their voice to a listening project supported by Cancer Legal Care. This project, called “The Cookout”, offered the community a chance to discuss their experiences along the cancer care continuum—their spiritual, emotional, financial, medical, and legal experiences. During these interviews, and during our summer gathering, we discussed the strength of the informal community networks/support systems that sustain us, the healthcare systems that (sometimes) forget/ignore/confuse us, and the complex roles that legal and social services have had in the Black community.

We know every community will have a different “recipe” for health equity, but this image serves as an invitation to The Cookout. Pull up a chair, and join us in a new conversation about the Black cancer experience.

With thanks to the American Cancer Society for grant funding to support The Cookout.

